



**GLOBAL  
BRAIN HEALTH  
INSTITUTE**

2019  
ANNUAL  
REPORT



# Table of Contents

- Letter from the Executive Director . . . . . 3
- About GBHI . . . . . 4
- The Atlantic Fellows for  
Equity in Brain Health program . . . . . 5
- Regional stories . . . . . 6
- Annual conference highlights . . . . . 12
- Pilot awards . . . . . 14
- Projects . . . . . 16
- Fellows . . . . . 20
- Leadership, faculty and staff . . . . . 24
- Partners and affiliates . . . . . 26
- Financials at a glance . . . . . 27







# Letter from the Executive Director



Dear Friends and Colleagues,

I am delighted to share the first annual public report of the Global Brain Health Institute (GBHI).

This report is compiled as the Atlantic Fellows for Equity in Brain Health program completed training of our third cohort of fellows, now totaling 85 leaders from 29 countries. We recently welcomed our fourth cohort that includes 32 new leaders who broaden our geographic spread to seven new countries, including Bermuda, Chile, Ethiopia and Kenya.

This report chronicles a highly engaged and increasingly networked group of fellows whose collaborative efforts through art, medicine, research, education, and advocacy are making a global impact.

You will read of our growing efforts to reduce the impact of dementia worldwide, with examples of exciting new developments in Latin America, the Mediterranean, and the UK. You will also read about innovative pilot projects that fellows are running in their home communities. To date, more than 70 percent of Atlantic Fellows have returned to their communities to complete an activity aligned with our goals, providing stability for our fellows as they develop into regional leaders.

GBHI is increasingly recognized for our inter-professional approach, for our focus on brain health rather than disease, for championing the vulnerable, and for lifelong career support of our fellows. We remain committed to invest in regions beyond the US and Ireland, where our founding sites are based. We continue to share our deepest gratitude to our community members and supporters for providing us with the resources needed to truly change society around brain health.

Now, I'm thrilled to share with you the efforts of our community. I hope you will enjoy reading about them.

A handwritten signature in black ink that reads "Victor Valcour". The signature is fluid and cursive, with the first letters of the first and last names being capitalized and prominent.

Victor Valcour, MD, PhD  
*Professor of Geriatric Medicine, UCSF Department of Neurology*  
*Executive Director, Global Brain Health Institute*

# About GBHI

The Global Brain Health Institute (GBHI) is dedicated to protecting the world's aging populations from threats to brain health.

Dementia is rapidly increasing around the world. By 2050, the number of people with dementia could triple from 50 million to 152 million, overwhelming families, communities, public health care systems, and economies worldwide.

In 2015, the Atlantic Philanthropies offered significant funding to the University of California, San Francisco (UCSF) and Trinity College Dublin, the University of Dublin (Trinity) to establish GBHI, a groundbreaking initiative that aims to tackle the looming dementia epidemic and improve brain health worldwide.

GBHI works to reduce the scale and impact of dementia in three ways: by training and connecting the next generation of leaders in brain health through the Atlantic Fellows for Equity in Brain Health program; by collaborating in expanding preventions and interventions; and by sharing knowledge and engaging in advocacy.

GBHI brings together a powerful mix of disciplines, professions, backgrounds, skill sets, perspectives, and approaches to develop new solutions. We strive to improve brain health for populations across the world, reaching into local communities and across our global network. We focus on working compassionately with people in vulnerable and underserved populations to improve outcomes and promote dignity for all.



Phyllis Jean Hamilton, Chief United States District Judge

# The Atlantic Fellows for Equity in Brain Health



Cindy Weinsten, PhD (left) and Shamiel McFarlane, MBBS, MSc, Atlantic Fellows

*Atlantic Fellows*

FOR EQUITY  
IN BRAIN HEALTH

The Atlantic Fellows for Equity in Brain Health program at GBHI provides innovative training, networking, and support to emerging leaders focused on improving brain health and reducing the impact of dementia worldwide. It is one of seven global Atlantic Fellows programs to advance fairer, healthier, and more inclusive societies.

Atlantic Fellows at GBHI join the program for 12 months and have a base at UCSF or Trinity. A curriculum covering economics, epidemiology, law and ethics, leadership, neurology, public policy, and statistics constitutes part of the experience. Fellows also gain experiences in the clinic, engage in projects aimed at advancing brain health, and have opportunities to work with individuals with cognitive disorders. Through intensive mentoring, fellows are guided in the development of projects, careers, leadership, and policy efforts.

After training, we expect fellows to return to their home community to implement a project using newly acquired knowledge and expertise. They continue to have access to career-duration mentoring, pilot funds, and an international network of colleagues.

The Atlantic Fellows program at GBHI will train hundreds of global leaders over the next 15 years in the US, Ireland, and across the world to promote brain health and dementia prevention, to reduce stigma, and to alleviate suffering. GBHI is dedicated to training at least 50% of fellows who come from regions outside the US and Ireland. The fellows come from many different professional backgrounds including clinical practice, social sciences, arts, economics, public health, research, policy and education.

# Regional stories

## EFFORTS TO FIGHT DEMENTIA IN LATIN AMERICA TAKE HOLD

“If we really want to make change, we have to go beyond borders,” says Agustin Ibáñez, PhD, an Atlantic Fellow at GBHI and neuroscientist from Argentina.

Countries in Latin America and the Caribbean (LAC)—where a third of the population lives in poverty, combined with one of the world’s fastest growing elderly populations—are experiencing growing rates of dementia faster than most of the world. Like dementia in developing countries worldwide, cases in LAC are expected to triple by 2050. This rise will bring great challenges for care, diagnosis, and prevention.

Since its founding, GBHI has invested major efforts to address the dementia epidemic in LAC. In the Atlantic Fellows for Equity in Brain Health program, a third of the fellows are from this region. As designed, new leaders of brain health are starting to emerge to deliver positive change to brain health in LAC.

In 2018, Ibáñez helped to launch the Latin America and Caribbean Consortium on Dementia (LAC-CD), a regional organization overseeing and promoting clinical and research activities on dementia. The budding group focuses on building networks across LAC to support collaborative training, research, and clinical practice.

The LAC-CD achieved significant attention in 2018, including an award from the Inter-American Development Bank (IDB) and a publication in *Neurology*. As a result, the network is growing. The consortium has recruited 100 members with many more expected.

“We have a huge opportunity to create a sense of membership, to share a common voice, and to empower local groups,” says Ibáñez. “We are reaching for a big dream.”

The dream of using literacy and education to improve dementia is driving Elisa Resende, MD, an Atlantic Fellow at GBHI and neurologist from Brazil. She is exploring how late life education and literacy programs may re-shape the brain to become more resilient.

In addition to poverty and limited health care, LAC sees high rates of dementia due to low literacy and education rates. For instance, 30 percent of older adults in Brazil are illiterate.

Resende hopes her work will show how adult literacy training can reduce the risk of dementia. In 2018, her efforts received major attention, including an award from the World Federation of Neurology and publications in *JAMA Neurology*, among others.

“If we can prove that the literacy program is going to prevent or reduce (dementia), it can be a prevention strategy, which is cheap,” says Resende. The continued efforts of the next generation of leaders in brain health appear to be well on the way to delivering positive change to brain health in LAC.



Agustin Ibáñez, PhD, Atlantic Fellow



Elisa Resende, MD, Atlantic Fellow



**Examples of Impact and Collaboration  
in Latin America and Caribbean**

Bárbara Costa Beber (Brazil) -  
Faculty position at Universidade Federal  
do Rio Grande do Sul (UFRGS)

Alejandra Guerrero Barragán (Colombia) -  
Publication in *Colombian Neurological  
Association* journal

Jorge Leon Salas (Costa Rica) -  
Publication in *Age and Aging* journal

Jorge J. Llibre-Guerra (Cuba) -  
World Federation of Neurology Grant

Elisa de Paula França Resende (Brazil) -  
World Federation of Neurology Grant

Maira Okada de Oliveira (Brazil) -  
Publication in *Brazilian Journal of Psychiatry*

**Examples of GBHI Collaborative Networks  
in Latin America and Caribbean**

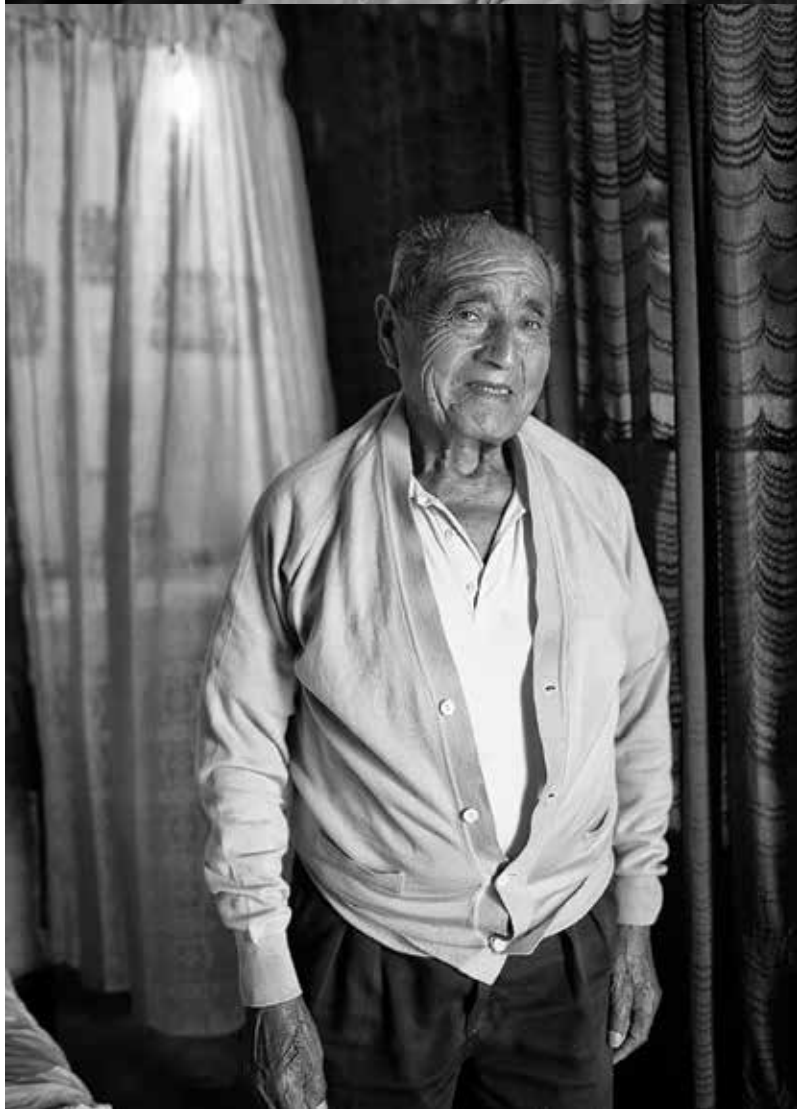
Brazilian Brain Bank

Fellows Interest Group for Latin America  
and Caribbean

Latin American and Caribbean Consortium  
on Dementia (LAC-CD)

STRIDE, helping to link dementia resources  
across Latin America

Working Group on Low Literacy Populations  
for Brain Health Assessment



# Regional stories

## PROMOTING BRAIN HEALTH IN THE MEDITERRANEAN

Upon returning to Egypt after completing medical training, Mohamed Salama, MD, a toxicologist, recognized a large gap between neuroscience research and its clinical practice.

“I believe dementia is a multidisciplinary problem,” says Salama, Atlantic Fellow at GBHI. “We need to have people of different backgrounds brainstorming to find new innovative solutions.”

Thus, he has devoted his efforts to bridging this gap. With support from the Ministry of Social Solidarity in Egypt, Salama hopes to develop a longitudinal study of 30,000 people over age 40 to consider physical, mental health, and cognitive measures and how they relate to social and economic data. The study, which he hopes to call AL-SEHA (“Health”), will include elements from an international set of longitudinal epidemiological studies, including the Irish Longitudinal Study on Ageing (TILDA) survey.

In a developing country like Egypt, many do not consider dementia a top health priority. It is often misunderstood as a sign of normal aging.

“Spreading awareness about dementia is an important first step,” says Hany Ibrahim, MD, PhD,

Atlantic Fellow at GBHI and geriatrician from Egypt.

Perhaps the misinformation is related to the high proportion of youth. In a country of 98 million, only four percent (4 million) of its citizens are over 65 years old.

At Ain Shams University Geriatric Hospital in Cairo, Ibrahim is taking steps to help this problem. He has set up a laboratory for cognitive training for people with cognitive disorders.

“Older adults deserve dedicated efforts to preserve and enhance their mental and physical health,” says Ibrahim.

The lab is part of a new coordinated effort, the East Mediterranean Brain Health Initiative, which aims to improve access to brain health technologies across the underserved region. The initiative was co-founded by Ibrahim; Elaine Howard, MSc, Atlantic Fellow and Founder of Dementia Focus from Dublin, Ireland, who is helping to develop new dementia care models; and Stelios Zygouris, MSc, Atlantic Fellow and neuropsychologist from Thessaloniki, Greece, who is helping to create novel, enjoyable, and easy to use computerized tests that can detect early cognitive problems.

“New technologies can promote health equity and universal access to brain health,” says Zygouris.



Mohamed Salama, MD, Atlantic Fellow



Hany Ibrahim, MD, PhD, Atlantic Fellow



Elaine Howard, MSc, Atlantic Fellow



Stelios Zygouris, MSc, Atlantic Fellow

“Spreading awareness about dementia is an important first step.”

-HANY IBRAHIM, MD, PHD, ATLANTIC FELLOW



# Regional stories

## IMPROVING END-OF-LIFE CARE IN THE UK, NORTH AMERICA, AND BEYOND

As a young physician in New York, Elizabeth Dzung, MD, observed patients with dementia who were often subjected to unnecessary medical treatments, frequently suffering as a result.

“I felt a great deal of moral distress providing intensive care level treatment when it could not improve their condition,” says Dzung. “I felt like I was not acting in their best interest.”

As an Atlantic Fellow at GBHI, Dzung aims to understand why end-of-life care can result in patients with dementia receiving unnecessary treatments, and what can be done to reduce it. To this end, she is comparing dementia care in hospitals in the US, France and the UK.

So far, Dzung’s research suggests that providers in the US tend to prioritize patient choice, while providers in the UK tend to prioritize treatment benefit. She hopes her work will highlight how the attitudes of medical professionals can be changed to empower people with dementia and their families to make the best choices.

Determining the best choices for the final stages of dementia can be difficult. Atlantic Fellow Corrina Grimes, MSc, who devotes her career to

improving palliative care, recognizes this challenge. She co-leads the Northern Ireland Palliative Care in Partnership Program, whose aim is to design and support the delivery of connected services to improved quality of life at end of life.

“We need to ensure that everyone has the optimal end of life through palliative care,” says Grimes. “Particularly for those with advanced progressive conditions.”

Using a computer screening tool, Grimes is reviewing routine clinical data, including medical notes, to identify people in need of planning and care coordination. She has recruited dozens of medical practices across Northern Ireland to participate.

“We hope (our work) will help to alert general practitioners to the palliative needs of people with dementia,” says Grimes.

As a physician providing healthcare to older adults in her home country, Mexico, Brenda Pérez Cerpa, MD, noticed that comprehensive care of advanced-stage dementia patients was undervalued.

“Palliative care should be considered a fundamental part of the services and care offered to a patient living with dementia,” says Pérez Cerpa.



Elizabeth Dzung, MD, Atlantic Fellow



Corrina Grimes, MSc, Atlantic Fellow



Brenda Pérez Cerpa, MD, Atlantic Fellow



Krista Harrison, PhD, Atlantic Fellow

As an Atlantic Fellow, Pérez Cerpa is evaluating a tool for end-of-life care that could be used by families of individuals with advanced dementia. Set in Guadalajara, Mexico, the study could help families make challenging healthcare decisions at an early stage of dementia.

“Until a new breakthrough development is achieved, patients living with dementia unfortunately will progress to an advanced stage,” says Pérez Cerpa. “Supportive care is fundamental.”

In the US, Krista Harrison, PhD, Atlantic Fellow and Assistant Professor of Geriatrics at UCSF, recognized a lack of knowledge about individuals with advanced dementia who live at home.

“At home, it can be more difficult to access medical and social support,” says Harrison.

As an Atlantic Fellow, she is working to identify palliative care needs for individuals with prion diseases—a rare group of neurodegenerative diseases—and other dementias.

“Optimizing the quality of life for people with dementia living at home and their families requires evidence-based transformation of health systems and health policy,” she says.

To this end, Harrison is developing a palliative care toolkit using the input of caregivers. If successful, the study could develop guidance for palliative care for individuals with prion disease and possibly other dementias, worldwide.

## PALLIATIVE CARE IN DEMENTIA

GBHI faculty members Georges Naasan, MD; Christine Ritchie, MD; and Krista Harrison, PhD, are leading a project to identify palliative care needs and end-of-life challenges for people living with dementia. Working with an interdisciplinary team including Atlantic Fellows, they aim to identify educational needs of health care providers, and to develop, test and evaluate a team-based palliative care intervention for people with dementia and their caregivers.



Georges Naasan, MD

# Annual conference highlights

## GBHI GATHERS BRAIN HEALTH SPECIALISTS TO FOCUS ON DEMENTIA IN SOUTH AMERICA AND BEYOND

In April 2019, GBHI co-hosted the Alzheimer's Association International Conference (AAIC) Satellite Symposium in São Paulo, Brazil. The aim was to consider the latest ideas in dementia and the need to create a National Dementia Plan for Brazil, part of the WHO's goal to make dementia a public health priority.

"From projects rooted in local communities, to national training initiatives and pan national networks, we want to equip leaders with tools to address dementia across Latin America and beyond," says Lea Grinberg, MD, PhD, Executive Committee Member of GBHI and Associate Professor of Neurology and Pathology at UCSF.

In addition to discussing the unique challenges dementia poses for Latin American countries, the AAIC Satellite Symposium considered a wide range of dementia-related topics, including sleep medicine, gender differences in dementia, and how to reduce stigma about dementia.

Atlantic Fellows Boon Lead Tee, MD, MSc, and Yue Leng, PhD, MPhil, won best posters for their respective projects, "Neurolinguistics Presentation of Chinese Speaking Primary Progressive Aphasia Individuals" and "Sleep Medication Use and Risk of Dementia in a Biracial Cohort of Older Adults."

Brian Lawlor, MD, Deputy Executive Director of GBHI, says he is hopeful the gathering will emphasize the importance of a public health approach to dementia, and thus strengthen collaborations and innovations. "Together as an activated community, change can be delivered," says Lawlor.



Atlantic Fellows huddle



Stefania Ilinca, PhD, Atlantic Fellow



Shamiel McFarlane, MBBS, MSc, and Lingani Mbakile-Mahlanza, DPScy, Atlantic Fellows

The three-day meeting featured contributions from Atlantic Fellows for Equity in Brain Health, including Maira Okada de Oliveira, MSc, who is working to improve diagnosis of dementia among illiterate groups in Brazil, and Bárbara Costa Beber, PhD, who strives to increase awareness of dementia among Brazil's 40,000 speech and language therapists.



# The pilot awards for Global Brain Health leaders

Supported by GBHI, the Alzheimer’s Association, and Alzheimer’s Society UK, the pilot program aims to support emerging leaders in brain health and dementia by funding small-scale pilot projects, activities and/or studies to advance skills, knowledge, and efforts to delay, prevent and/or mitigate the impact of dementia. As Atlantic Fellows return to their home communities, these pilot awards help them to achieve regional impact while maintaining a link to GBHI through mentoring.

Diversity of discipline/profession and region is key to our success. Funded pilots range from advocacy to systems change to applied research. Fellows are addressing challenges with access to care, stigma, social determinants of brain health and education, and more.

## EARLY INDICATORS OF IMPACT



Eléonore Bayen, MD, PhD, Atlantic Fellow

### Brain Health Matters: Create Optimism and Understanding around Brain Health at School

*Eléonore Bayen, MD, PhD, France*

This is a creative initiative for children to raise awareness, improve knowledge, and promote better understanding of brain health and dementia prevention. Bayen created a public health campaign, “My Brain Robbie,” that provides free videos and educational materials to encourage healthy lifestyles to mitigate the risk of brain diseases. She piloted the project in 15 classrooms, with 450 children aged 7 to 11 years. The campaign has been well received, with tens of thousands of video views and engagement from the French Education Minister. Bayen is working to translate the materials into multiple languages for expanded dissemination.



Jorge J. Llibre Guerra, MD, MS, Atlantic Fellow

### The Cuban Dementia Study among Admixture Populations: A Longitudinal Study

*Jorge J. Llibre Guerra, MD, MS, Cuba*

This pilot aims to identify the effects of ancestry background on cognitive performance and dementia rates, and to determine the effects of genetics on the relation between ApoE (a protein implicated in Alzheimer’s disease), dementia and cognitive decline. Results from the study suggest that ethnic (black-white) disparities in dementia risk are better explained by socioeconomic differences than genetics. This research raises important issues to be addressed through policy recommendations for access to education and to health care. Llibre Guerra has been awarded funding by the World Federation of Neurology to continue his efforts to address dementia in Cuba.

Year	Awards Funded	Countries Represented	Total Funding
2017-2018	17	Brazil, Cuba, France, Greece, Ireland, Northern Ireland, Spain, and the USA	\$447K
2018-2019	21	Brazil, Colombia, Cuba, Greece, Hong Kong, Ireland, Israel, Jordan, Mexico, Northern Ireland, Taiwan, Turkey, UK, and the USA	\$522K

*Pilot awards funded to date*



Title	Location	Awardee
Burden and correlates of cognitive performance in Syrian refugees in Jordan	USA/Jordan	Tala Al-Rousan
Multimodal Intergenerational Social Contact Intervention (MISCI)	USA	Phaedra Bell
Factors that contribute to burdensome end-of-life treatments in dementia	UK/USA	Elizabeth Dzeng
The efficacy of speed of processing training in mild cognitive impairment	Turkey	Derya Durusu Emek Savaş
The Alzheimer Café model: a process evaluation study	Ireland	Christine FitzGerald
Feasibility: Identification of those who may benefit from palliative care	Northern Ireland	Corrina Grimes
Building evidence for palliative care for people with prion disease	USA	Krista Harrison
Music and dementia	Ireland	Catherine Jordan
Citizen Brain	USA	Josh Kornbluth
Sleep, cognitive decline and dementia—a comparison between China and the US	USA	Yue Leng
Age-related hearing loss and neural correlates of visual short-term memory	Ireland	David Loughrey
Gut microbiome restoration in elders with HIV-associated cognitive disorder	Mexico	Luis Arnoldo Muñoz Nevarez
Dementia risk charts for use in low- and middle-income countries	Ireland/Cuba	Geeske Peeters
Evaluating a decision aid for families of patients with advanced dementia	Mexico	Brenda Pérez Cerpa
Substance use in early onset Alzheimer's disease	Colombia	Claudia Ramos
The brain health assessment for diagnosis of MCI-dementia in primary care	Cuba	Ana Margarita Rodriguez Salgado
The costs and burden of informal caregiving for dementia in Brazil	Brazil/USA	Talita Rosa
Cognitive behavioral therapy dyad treatment for insomnia in MCI	Greece	Konstantina Sykara
Primary progressive aphasia assessment in Chinese speakers	USA/Taiwan/Hong Kong	Boon Lead Tee
Family stigma and caregiver burden in early onset dementia	Colombia	Lina Velilla
Circadian rhythm and sleep disturbances in FTD, AD and older adults	Israel/USA	Jennifer Zitser

Funded pilots 2018-2019

# Projects

Projects are intended to support an environment of learning. They are awarded to faculty based on mission alignment, potential for fellow engagement, and ability for growth. Typically implemented at founding or regional sites or fellow-affiliated institutions, projects create a unique training environment for Atlantic Fellows while demonstrating GBHI-mission aligned activities.

Project Title	Principal Investigators	Description	Budget
Care Ecosystem	Kate Possin (UCSF)	Creating a supportive care program for people with dementia and their families	\$250,000
Detect	Claire Gillan (Trinity)	Developing an internet-based platform of gamified cognitive tests	\$249,983
hear/say	Jennifer Merrilees (UCSF), Lorina Naci (Trinity), Caroline Prioleau (UCSF), Dominic Trépel (Trinity)	Training fellows to collect oral histories of elders and people with cognitive impairment, producing a book and documentary film	\$250,000
Health and Retirement Study	Rose Anne Kenny (Trinity) & Kristine Yaffe (UCSF)	Harmonizing data across UCSF and Trinity	\$248,217
Impact Positive Emotion	Virginia Sturm (UCSF)	Examining emotional reactivity and mental health symptoms in older adults	\$50,000
Neuro ACE	Jyoti Mishra (UCSF)	Developing a mobile mental health technology that serves real-time, real-world neural and cognitive diagnostics	\$50,000
Neurology Center of Excellence	Anna Chodos & Sergio Lanata (UCSF)	Creating a Neurology Center of Excellence at the San Francisco General Hospital	\$244,926
No Pressure	Sabina Brennan (Trinity)	Establishing if health literacy regarding dementia risk and hypertension can be improved	\$41,052
Palliative Care in Dementia	Krista Harrison & Christine Ritchie (UCSF)	Piloting palliative care in our memory center	\$176,286
PREVENT	Lorina Naci & Brian Lawlor (Trinity)	Establishing suitable intermediate markers of dementia	\$269,800
Traumatic Brain Injury (TBI)	Raquel Gardner (UCSF) & Fiona Wilson (Trinity)	Developing a scalable self-administered TBI screening for diverse older adults at risk of dementia	\$50,000

GBHI projects funded 2015-2018



hear/say training in San Francisco



hear/say training in Dublin

# Project highlight: PREVENT

There are no treatments to prevent, delay, or slow the progression of Alzheimer's disease, the commonest cause of dementia. Lorina Naci, PhD, MSc, GBHI Executive Committee Member and Assistant Professor of Psychology at Trinity, is determined to change this.

"My goal is to combine high-impact basic science with applied research to help improve human life," says Naci.

Along with Brian Lawlor, MD, Deputy Executive Director of GBHI—as well as top scientists from the University of Edinburgh, Oxford University, Cambridge University, Imperial College London, and Montpellier University—Naci is leading a team of neuroscientists, clinicians, and fellows to find early indicators that suggest an increased risk of the disease.

The project, called PREVENT, is a major initiative in Ireland to identify mid-life risks for later life dementia and—using imaging, genetic, cognitive, and biological tests—characterize early changes of neurodegenerative disease. Early detection of risk

can lead to better diagnoses, potential targets for treatment, and better understanding of the disease.

"In the face of a global dementia pandemic, it is extremely important to understand the nature of the earliest cognitive/functional changes, as well as their biological basis," says Naci.

Naci works with Atlantic Fellows at GBHI to expand the reach of PREVENT, including Eimer McGlinchey, PhD, who is applying the same research framework to the Down Syndrome population, which has a five-fold increased risk of Alzheimer's disease; Laura Booi, PhD, who is aiming to identify dementia-related fears and stigma in healthy midlife adults; and Catherine Jordan, PhD, MSc, who is exploring the benefits of music on brain health.

Naci won one of 40 prestigious Provost PhD project Awards at Trinity, including full funding of a four-year PhD student to work with the PREVENT team. The GBHI team's efforts in PREVENT have been featured in the popular media and are the focus of a feature documentary.



# Project highlight: Care Ecosystem

In dementia, the needs of the patient are complex, and often include medical, social, legal, and financial challenges.

“The majority of the burdens of dementia are carried by the caregiver,” says Katherine Possin, PhD, faculty member at GBHI and Associate Professor of Neurology at UCSF. “They didn’t sign up for this. They weren’t trained for this.”

To help manage issues that can arise, Possin and collaborators from GBHI, UCSF, and the University of Nebraska Medical Center created the Care Ecosystem, a model of collaborative, multidisciplinary dementia care designed to provide personalized, cost-efficient care for persons with dementia and their caregivers.

“We have a responsibility as a society to help those caregivers,” says Possin. “This is what the Care Ecosystem does.”

The Care Ecosystem model includes care team navigators, clinicians with dementia expertise—including nurses, pharmacists, and social workers—and care protocols. The telephone and internet-based intervention is designed to help health systems and clinics provide better care to the growing population affected by dementia and their caregivers.

“We wanted to design a model of care that could reach patients with dementia wherever they live,” says Possin.

To help implement Care Ecosystems in health systems across the U.S., the team is collaborating with Atlantic Fellows for Equity in Brain Health, Talita Rosa, MS, MD; Alissa Bernstein, PhD, MPH; and Krista Harrison, PhD, who bring expertise in global health, medical anthropology, and geriatrics, respectively, empowering the project to scale with sensitivity and flexibility across varied sociocultural and socioeconomic contexts.

As the biggest non-drug randomized clinical trial ever conducted for dementia, Care Ecosystem is redefining dementia care.

“We’re going to work on this until patients across the world are getting better dementia care,” says Possin.



A care team navigator conversing with a family.



# Fellows (2016–2018)

## GLOBAL REACH

The fellows come from the following regions:

**28%** LATIN AMERICA & CARIBBEAN

**22%** NORTHERN EUROPE

**19%** NORTH AMERICA

**18%** MEDITERRANEAN

**4%** SOUTHERN AFRICA

**4%** EASTERN ASIA

**2%** WESTERN EUROPE

**1%** SOUTHERN ASIA

**1%** WESTERN AFRICA

**1%** EASTERN EUROPE

## INTER-PROFESSIONAL

The fellows come from a wide variety of clinical and non-clinical professions including:

**MEDICINE**

**SOCIAL SCIENCE**

**PUBLIC POLICY**

**HEALTH  
ECONOMICS**

**JOURNALISM**

**PERFORMING ARTS**

**BUSINESS**

**LAW**

**TECHNOLOGY**

**ARCHITECTURE**

**COGNITIVE  
SCIENCE**

**PUBLIC HEALTH**

**EPIDEMIOLOGY**

**FINE ARTS**

### Rufus Akinyemi

Neurology  
Nigeria, 2018

### Tala Al-Rousan

Internal Medicine  
Jordan, 2017

### Jalayne Arias

Neuroethics  
USA, 2016

### Mircea Balasa

Neurology  
Spain, 2016

### Nicole Batsch

Gerontology  
USA, 2016

### Eléonore Bayen

Medicine & Health  
Economics  
France, 2016

### Phaedra Bell

Education, Theater  
USA, 2017

### Jane Bentley

Music  
United Kingdom, 2018

### Alissa Bernstein

Medical Anthropology  
& Public Health  
USA, 2016

### Kirsty Bobrow

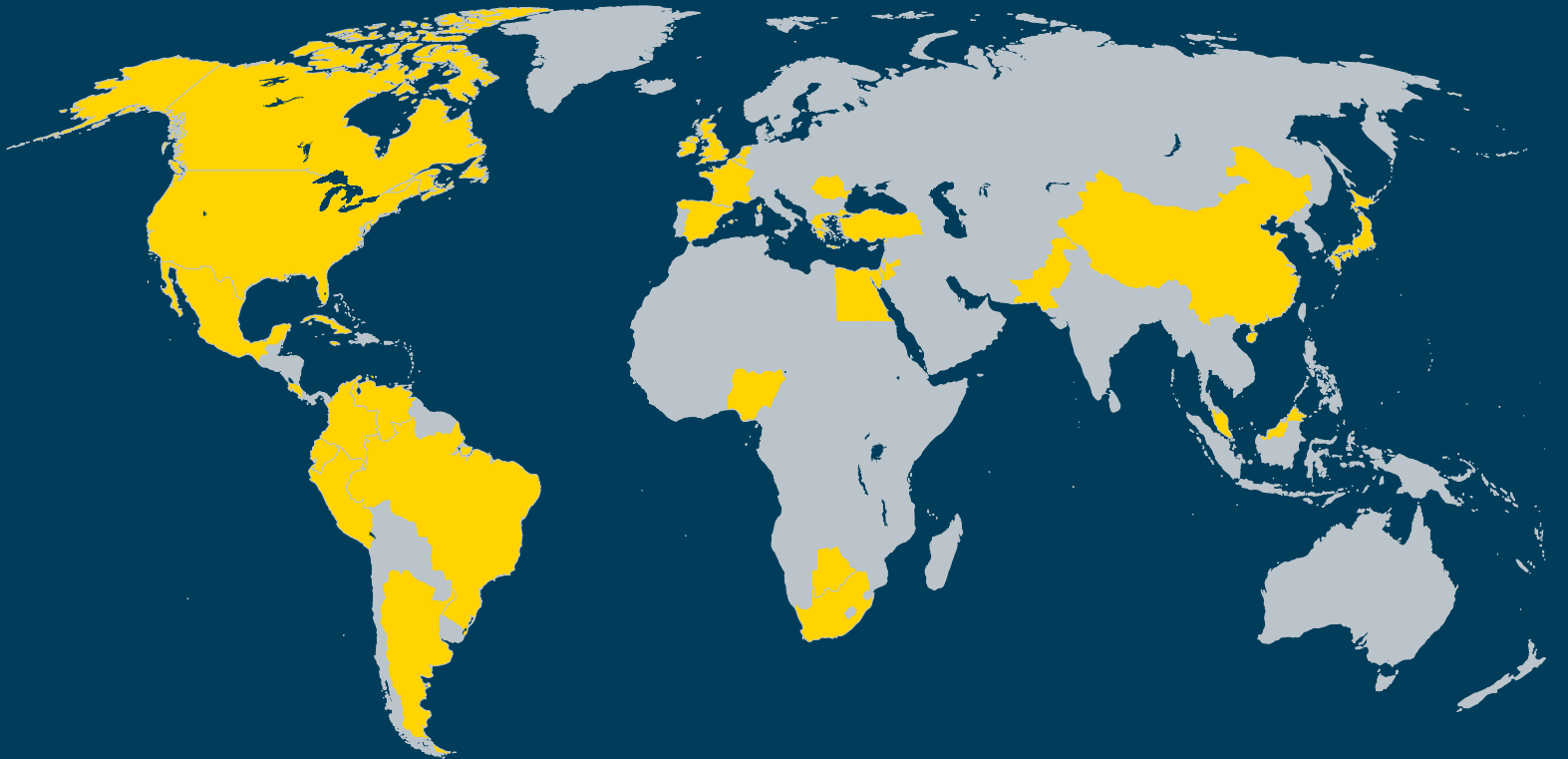
Public Health &  
Epidemiology  
South Africa, 2018

### Laura Booi

Gerontology  
Canada, 2018

### Lenisa Brandao

Speech-Language  
Pathology  
Brazil, 2018



**Dominic Campbell**

Elder Activism  
Ireland, 2016

**María Carmona-Iragui**

Behavioral Neurology  
Spain, 2016

**Siobhan Casey**

Marketing & Business  
Development  
United Kingdom, 2018

**Gabri Christa**

Choreography & Film  
Curaçao/USA, 2018

**Heidi Clare**

Music  
USA, 2016

**Laurent Cleret de  
Langavant**

Neurology & Statistics  
France, 2016

**Bárbara Costa Beber**

Speech & Language  
Brazil, 2016

**Krystal Culler**

Behavioral Health  
USA, 2017

**Emma Cunningham**

Geriatrics  
United Kingdom, 2017

**Walter Dawson**

Health Policy  
USA, 2018

**Myriam De La Cruz  
Puebla**

Neurology  
Ecuador, 2018

**Derya Durusu Emek  
Savas**

Neuroscience  
Turkey, 2017

# Fellows (2016–2018)

**Elizabeth Dzeng**  
Sociology & Medicine  
USA, 2017

**Laís Fajersztajn**  
Epidemiology  
Brazil, 2018

**Christine FitzGerald**  
Psychosocial Research  
Ireland, 2016

**Miriam Galvin**  
Social Science &  
Health Services  
Ireland, 2018

**Corrina Grimes**  
Palliative Care  
United Kingdom, 2017

**Alejandra Guerrero Barragán**  
Neurology  
Colombia, 2017

**Sana-e-Zehra Haidry**  
Psychology &  
Language  
Pakistan, 2018

**Krista Harrison**  
Policy & Palliative Care  
USA, 2017

**Sandra Higuét**  
Geriatrics  
Belgium, 2017

**Elaine Howard**  
Care Models  
Ireland, 2016

**Agustin Ibáñez**  
Neuroscience  
Argentina, 2018

**Hany Ibrahim**  
Geriatric Medicine  
Egypt, 2016

**Stefania Ilinca**  
Health Economics  
Romania, 2018

**Catherine Jordan**  
Cognitive Neuroscience  
Ireland, 2017

**Elissaios Karageorgiou**  
Neurology &  
Neuroscience  
Greece, 2016

**Ophir Keret**  
Neurology  
Israel, 2018

**Emi Kiyota**  
Environmental  
Gerontology  
Japan, 2018

**Silvia Kochen**  
Neuroscience  
Argentina, 2016

**Josh Kornbluth**  
Comedy & Performance  
USA, 2016

**Alex Kornhuber**  
Photography  
Peru, 2018

**Yue Leng**

Epidemiology  
China, 2017

**Jorge Leon Salas**  
Neuropsychiatry  
Costa Rica, 2018

**Jorge Llibre Guerra**  
Neurology  
Cuba, 2016

**Mariana Longoria Ibarrola**  
Psychiatry  
Mexico, 2017

**David Loughrey**  
Research Psychology  
Ireland, 2017

**Jeronimo Martin**  
Emergency Medicine  
Mexico, 2017

**Lingani Mbakile-Mahlanza**  
Neuropsychology  
Botswana, 2018

**Claire McEvoy**  
Nutrition &  
Public Health  
United Kingdom, 2016

**Shamiel McFarlane**  
General Practice  
Medicine  
Jamaica, 2018

**Eimear McGlinchey**  
Intellectual Disability  
Ireland, 2018

**Luis-Arnoldo Muñoz-Nevarez**  
Geriatric Medicine  
Mexico, 2017

**Maira Okada de Oliveira**  
Neuropsychology  
Brazil, 2018

**Rogério Panizzutti**  
Neuropsychiatry &  
Public Health  
Brazil, 2016

**Elisa de Paula França Resende**  
Neurology  
Brazil, 2016

**Stefanie Piña-Escudero**  
Geriatrics  
Mexico, 2018

**Maritza Pintado Caipa**  
Neurology  
Peru, 2018

**Geeske Peeters**  
Public Health &  
Preventive Medicine  
Netherlands, 2016

**Brenda Pérez Cerpa**  
Geriatric Medicine  
Mexico, 2017



**Claudia Ramos**  
Psychiatry  
Colombia, 2017

**Kirti Ranchod**  
Neurology  
South Africa, 2018

**Rowena Richie**  
Art & Education  
USA, 2018

**Ana Margarita  
Rodriguez Salgado**  
Neuropsychology  
Cuba, 2017

**Lorna Roe**  
Health Services  
Ireland, 2018

**Adrià Rofes**  
Neuroscience  
Spain, 2016

**Talita Rosa**  
Health Economics  
Brazil, 2017

**Mohamed Salama**  
Neurotoxicology  
Egypt, 2018

**Fionnuala Sweeney**  
Journalism  
Ireland, 2016

**Claire Sexton**  
Neuroscience  
United Kingdom, 2017

**Konstantina Sykara**  
Clinical Psychology  
Greece, 2017

**Jamie Talan**  
Neuroscience  
Journalism  
USA, 2016

**Ioannis Tarnanas**  
Neuroscience &  
Computer Science  
Greece, 2016

**Boon Lead Tee**  
Neurology  
Malaysia, 2017

**Lina Velilla**  
Psychology &  
Epidemiology  
Colombia, 2016

**Dana Walrath**  
Writing, Art, &  
Anthropology  
USA, 2018

**Fiona Walsh**  
Architecture  
UK/Ireland, 2018

**Greg Walsh**  
Life Sciences Business  
UK/Ireland, 2018

**Adam Waskow**  
Animal Therapy &  
Training  
USA, 2016

**Cindy Weinstein**  
Higher Education  
USA, 2018

**Wilby Williamson**  
Sport & Exercise  
Medicine  
United Kingdom, 2018

**Jennifer Zitser**  
Neurology  
Venezuela/Israel, 2017

**Stelios Zygoris**  
Neuropsychology  
Greece, 2016

Lina Velilla, MS; Boon Lead Tee, MD, MSc; Phaedra Bell, PhD; and Yue Leng, PhD; Atlantic Fellows

Rufus Akinyemi, MBBS, MSc, PhD, Atlantic Fellow



# Leadership, faculty and staff

## GOVERNING BOARD

### **Veronica Campbell, PhD**

Bursar & Director of Strategic Innovation  
Office of the Provost, Trinity

### **Maria Carrillo, PhD**

Chief Science Officer  
Alzheimer's Association

### **S. Andrew Josephson, MD**

Professor of Neurology and Chair  
Department of Neurology, UCSF

### **Lea Grinberg, MD, PhD**

Executive Committee Member, GBHI  
Associate Professor of Neurology and Pathology,  
UCSF

### **Brian Lawlor, MD**

Deputy Executive Director, GBHI  
Professor of Psychiatry, Trinity

### **Bruce L. Miller, MD**

Co-Director, GBHI  
Professor of Neurology, UCSF

### **Lorina Naci, PhD, MsC**

Executive Committee Member, GBHI  
Assistant Professor of Psychology, Trinity

### **Ian Robertson, PhD**

Co-Director, GBHI  
Professor of Psychology, Trinity

### **Victor Valcour, MD, PhD**

Executive Director, GBHI  
Professor of Geriatric Medicine in Neurology, UCSF

## FACULTY & STAFF

### **Isabel Elaine Allen**

Epidemiology &  
Biostatistics  
UCSF

### **Vera Bakman**

Finance &  
Administration  
UCSF

### **Cindy Barton**

Nursing  
UCSF

### **Arun Bokde**

Neuroimaging  
Trinity

### **Winston Chiong**

Neuroethics  
UCSF

### **Clíona Ní Cheallaigh**

Gerontology  
Trinity

### **David Coghlan**

Organization  
Development  
Trinity

### **Natalie Cole**

Neuroscience  
Trinity

### **Ciaran Conneely**

Operations  
Trinity

### **Eoin Cotter**

Learning Experience  
Trinity

### **Amanda Delaney**

Administration  
Trinity

### **Colin P Doherty**

Epileptology  
Trinity

### **Karen Dorsman**

Outreach  
UCSF

### **Damien Ferguson**

Neurology  
Trinity

### **Raquel Gardner**

Behavioral Neurology  
UCSF

### **Sarah Garrigues**

Care Models  
UCSF

### **Rosalie Gearhart**

Administration &  
Nursing  
UCSF

### **Michael Geschwind**

Neurology  
UCSF

### **Claire Gillan**

Psychology  
Trinity

**Anne-Marie Glynn**

Operations  
Trinity

**Marilu Gorno Tempini**

Neurolinguistics  
UCSF

**Lea Grinberg**

Neuropathology  
UCSF

**Carmen Hart**

Logistics  
UCSF

**Joseph Harbison**

Gerontology  
Trinity

**Barbara Hewitt**

Finance  
Trinity

**Brooke Hollister**

Sociology  
UCSF

**James Kahn**

Health Economics  
UCSF

**Niall Kavanagh**

Communications  
UCSF

**Suzanne Kawahara**

Leadership  
UCSF

**Yolanda Kennedy**

Communications  
Trinity

**Sean Kennelly**

Gerontology  
Trinity

**Rose Anne Kenny**

Gerontology  
Trinity

**Joel Kramer**

Neuropsychology  
UCSF

**Serggio Lanata**

Behavioral Neurology  
UCSF

**Iracema Leroi**

Geriatric Psychiatry  
Trinity

**Scott MacDonald**

Operations  
UCSF

**Kailey Mateo**

Program Evaluation  
UCSF

**Mindy Matice**

Learning Experience  
UCSF

**Jennifer Merrilees**

Nurse  
UCSF

**Georges Naasan**

Neurology  
UCSF

**Lorina Naci**

Psychology  
Trinity

**Charles Normand**

Health Economics  
Trinity

**Desmond O'Neill**

Gerontology  
Trinity

**Andrew Philipoff**

Technology  
UCSF

**Nicole Plata**

Administration  
UCSF

**Kate Possin**

Neuropsychology  
UCSF

**Ciara Power**

Alumni  
Trinity

**Caroline Prioleau**

Communications  
UCSF

**Kyle Pusateri**

Operations  
UCSF

**Richard Reilly**

Neural Engineering  
Trinity

**Christine Ritchie**

Geriatrics  
UCSF

**Camellia Rodriguez-SackByrne**

Alumni  
UCSF

**Roman Romero-Ortuno**

Gerontology  
Trinity

**Howie Rosen**

Neuroimaging  
UCSF

**Michael Schaffer**

Technology  
UCSF

**Bill Seeley**

Neuropathology  
UCSF

**Melanie Stephens**

Neurology  
UCSF

**Virginia Sturm**

Neuroscience  
UCSF

**Marie Theodore**

Administration  
UCSF

# Faculty and staff cont'd

**Steve Thomas**

Health Policy  
Trinity

**Katy Tobin**

Biostatistics  
Trinity

**Dominic Trépel**

Economics  
Trinity

**Winnie Tsou**

Technology  
UCSF

**Sven Vanneste**

Psychology  
Trinity

**Robert Whelan**

Psychology  
Trinity

**Beth Whitney**

Recruitment &  
Selection  
Trinity

**Brie Williams**

Geriatrics  
UCSF

**Kristine Yaffe**

Neuropsychiatry &  
Epidemiology  
UCSF

**Stacey Yamamoto**

Monitoring &  
Evaluation  
UCSF

**Jennifer Yokoyama**

Neurogenetics  
UCSF

## Partners and affiliates

### PARTNERS



## Atlantic Fellows

The Atlantic Philanthropies established the Atlantic Fellows in 2015 to culminate the foundation's work in the geographies and issue areas in which it historically focused, and its decades of investing in people and in their vision and ability to realize a better world. The seven interconnected Atlantic Fellows programs together create a global community to advance fairer, healthier, and more inclusive societies. Each of the programs is distinct and grounded in its local context, but all share a deep commitment to advancing equity. All programs start with a core fellowship experience and continue with fellows joining the lifelong global community.

### AFFILIATES



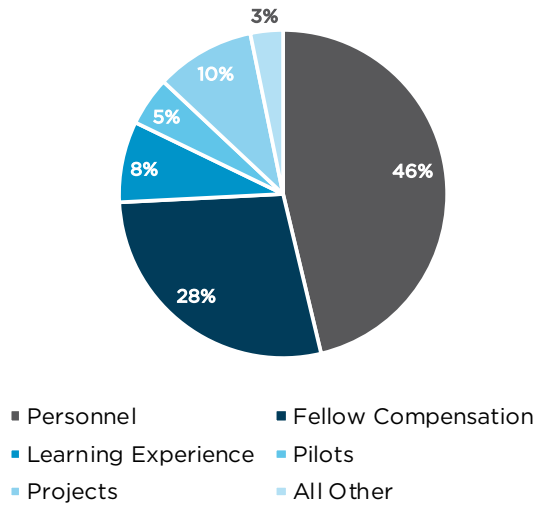
## Support

GBHI welcomes partners in philanthropy to secure the success of this unique program. For more information about how to support GBHI, please visit [www.gbhi.org/support](http://www.gbhi.org/support).

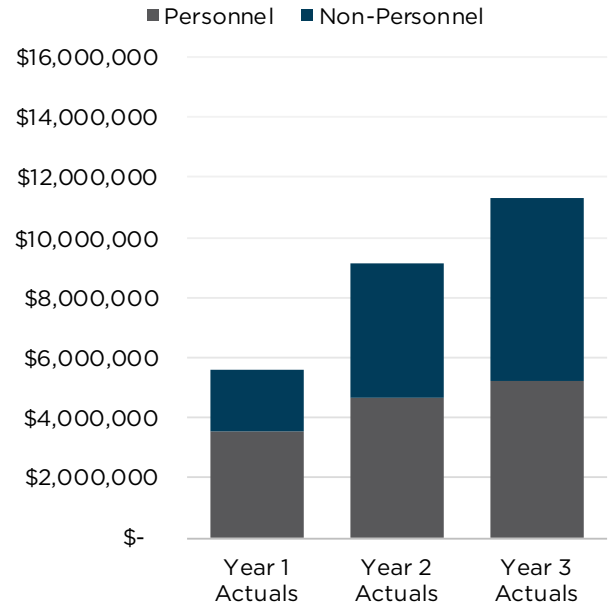
# Financials at a glance

## 2018-19 GBHI YEAR 3 SPEND

Total \$11.3M

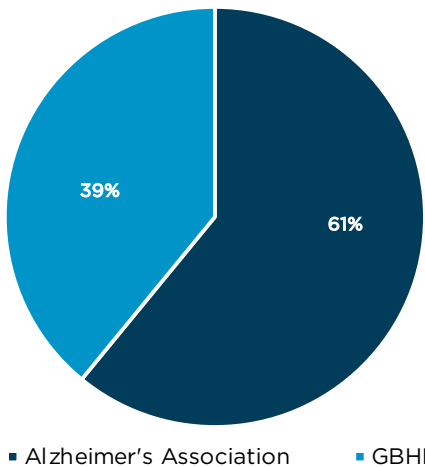


## GBHI YEAR 1 TO YEAR 3 GROWTH



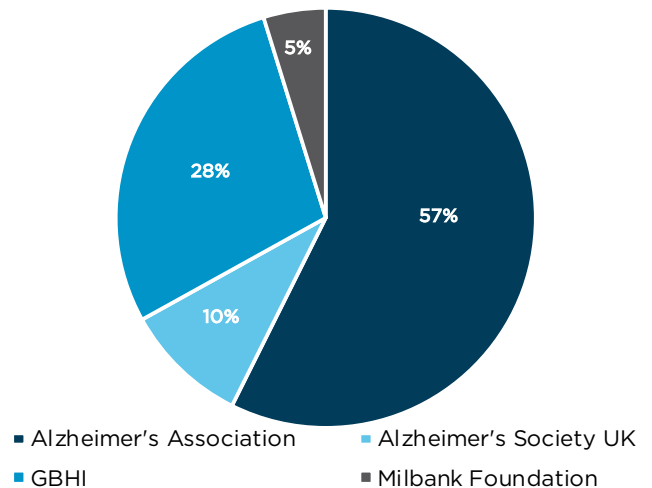
## 2017-18 PILOT AWARDS SOURCES

Total \$447K



## 2018-19 PILOT AWARDS SOURCES

Total \$522K



2018-2019 data is representative of GBHI programmatic year 3, fiscal year 2019, from July 1, 2018 to June 30, 2019. The first three years of start-up operations included annual growth in spending, reflecting the recruitment of faculty, staff, and robust Atlantic Fellows cohorts, as well as the ramping up of program implementation and in-residence learning experience. As GBHI enters steady-state operations in years 4 and 5, programmatic focus is shifting to include the alumni network and working towards global impact. *Note that these are unaudited financials.*

# Reducing the scale and impact of dementia worldwide







**GLOBAL  
BRAIN HEALTH  
INSTITUTE**

University of California, San Francisco (UCSF)  
675 Nelson Rising Lane, Suite 190  
San Francisco, California 94143  
USA

Trinity College Dublin  
Room 0.60, Lloyd Institute  
Dublin 2  
Ireland

**GBHI.ORG**



**Trinity College Dublin**  
Coláiste na Tríonóide, Baile Átha Cliath  
The University of Dublin

UCSF and Trinity College Dublin are the two founding sites and host institutions for GBHI and the Atlantic Fellows for Equity in Brain Health Program at GBHI, providing critical infrastructure, renowned faculty, and affiliation with two of the leading institutions in brain health research.